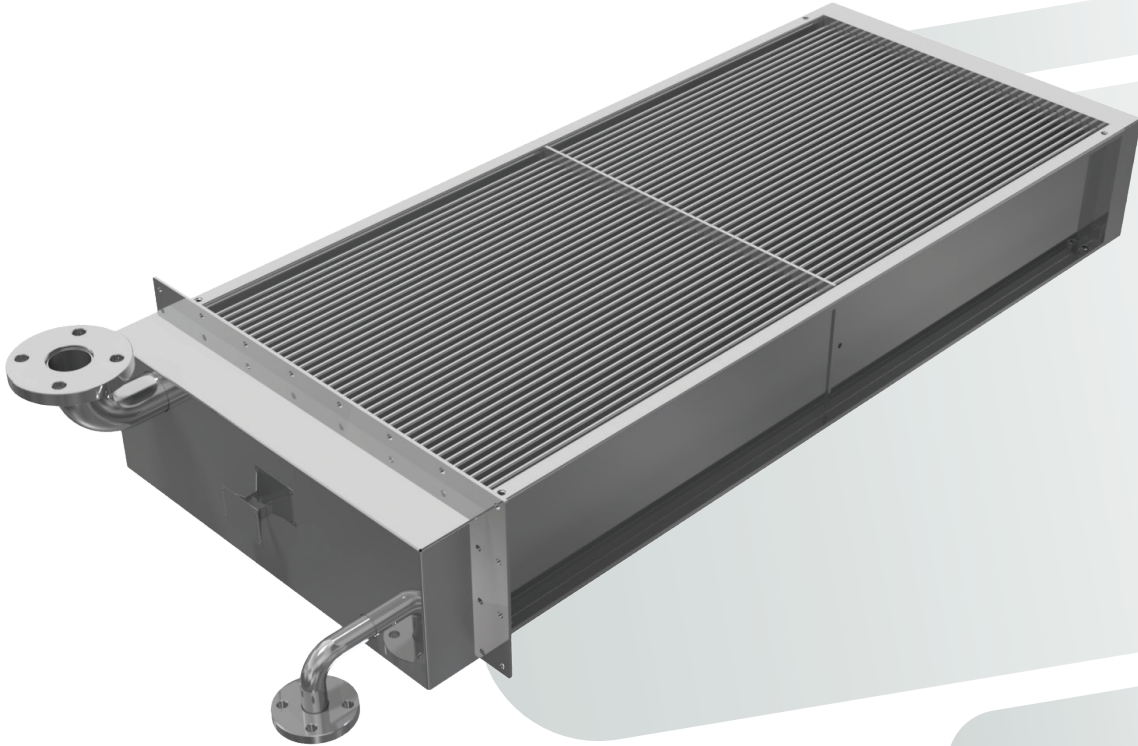




DAV·PS-snake



About PS-snake Family

DESCRIPTION

DAV PS-snake is a family of exchangers designed to combine extremely compact dimensions with the need to be cleaned easily and thoroughly.

To have a high ratio between the primary exchange surface and the overall dimension of the heat exchanger, are used smooth squashed tubes that can be of various materials, such as carbon steel, stainless steel, Ni-Cr alloy (Duplex, etc.) or titanium. The tubes are bent and not welded reducing the risk of leaks and breakages.

DAV PS-snake are particularly

suitable to be immersed in liquids or to cool / heat oily gases as in fish, meat and cured meats processing plants.

The smooth surface of the tubes can indeed be cleaned or sterilized by steam or with pressurized washer, for consequent low maintenance costs.

ADVANTAGES

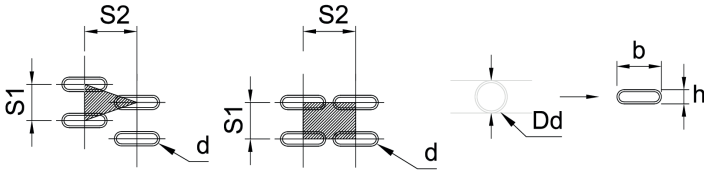
- High primary exchange surfaces
- High efficiency by small sizes
- Food grade materials
- Perfect in case of dirty medium
- Bespoke shapes
- Corrosion resistant materials
- Modular design
- Up to 90% seamless





Geometries

All type of customized versions available on request



Triangular tube pitch arrangement

Type	S16	S17	S30	S32	S40	S42
S1 [mm]	16	17	30	32	40	42
S2 [mm]	25,5	25,5	65	70	70	22,5
b*h [mm]	22*7	22*7	45*17	50*17	50*25	66*25
Dd deriv.	16	16	35	35	42	50

Square tube pitch arrangement

Type	Q16	Q17	Q30	Q32	Q40	Q42
S1 [mm]	16	17	30	32	40	40
S2 [mm]	25,5	25,5	65	70	70	22,5
b*h [mm]	22*7	22*7	45*17	50*17	50*25	66*25
Dd deriv.	16	16	35	35	42	50

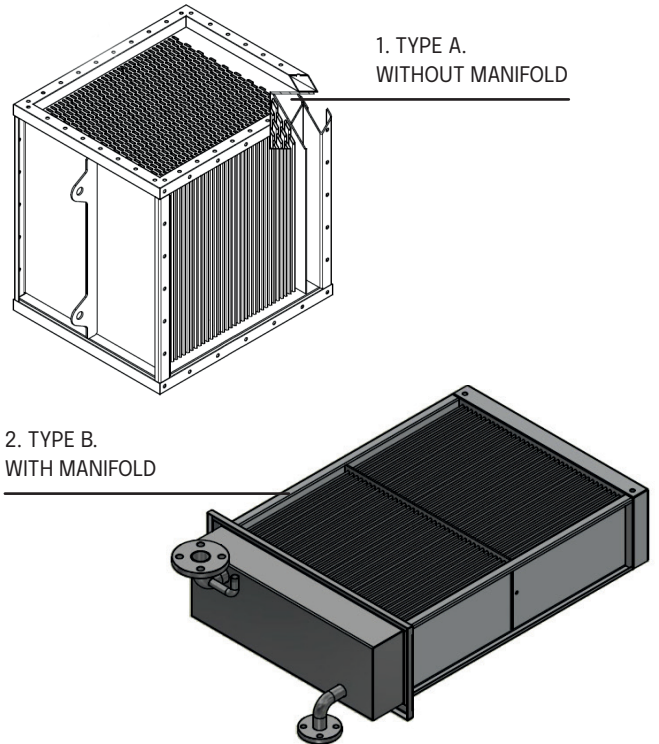
*other values available on request

Materials

- St. steel AISI 304
- St. steel AISI 316L
- St. steel AISI 316Ti
- St. steel AISI 321
- St. steel AISI 309
- Titanium
- Nickel Alloy

*other options available on request

Design type



Smart Details



- SMOOTH SQUASHED TUBE



- NO WELDED ELBOW JOINTS

Applications



Food & Beverage



Power



Heavy Industry



Depuration

